



NORTHERN MARIANA ISLANDS

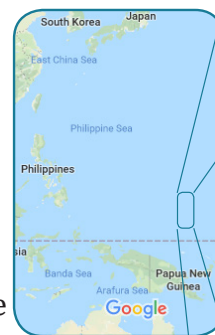
COASTAL MANAGEMENT

The CNMI Division of Coastal Resources Management is dedicated to the conservation of our islands unique and important natural resources so that residents and visitors may continue to enjoy them for generations to come. We work to promote environmental literacy, sustainable development, and wise resource use through our comprehensive permitting and enforcement processes, community outreach and education, and long-term monitoring and data gathering programs.



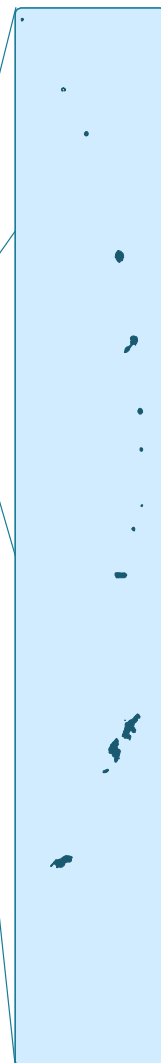
State Program in Action

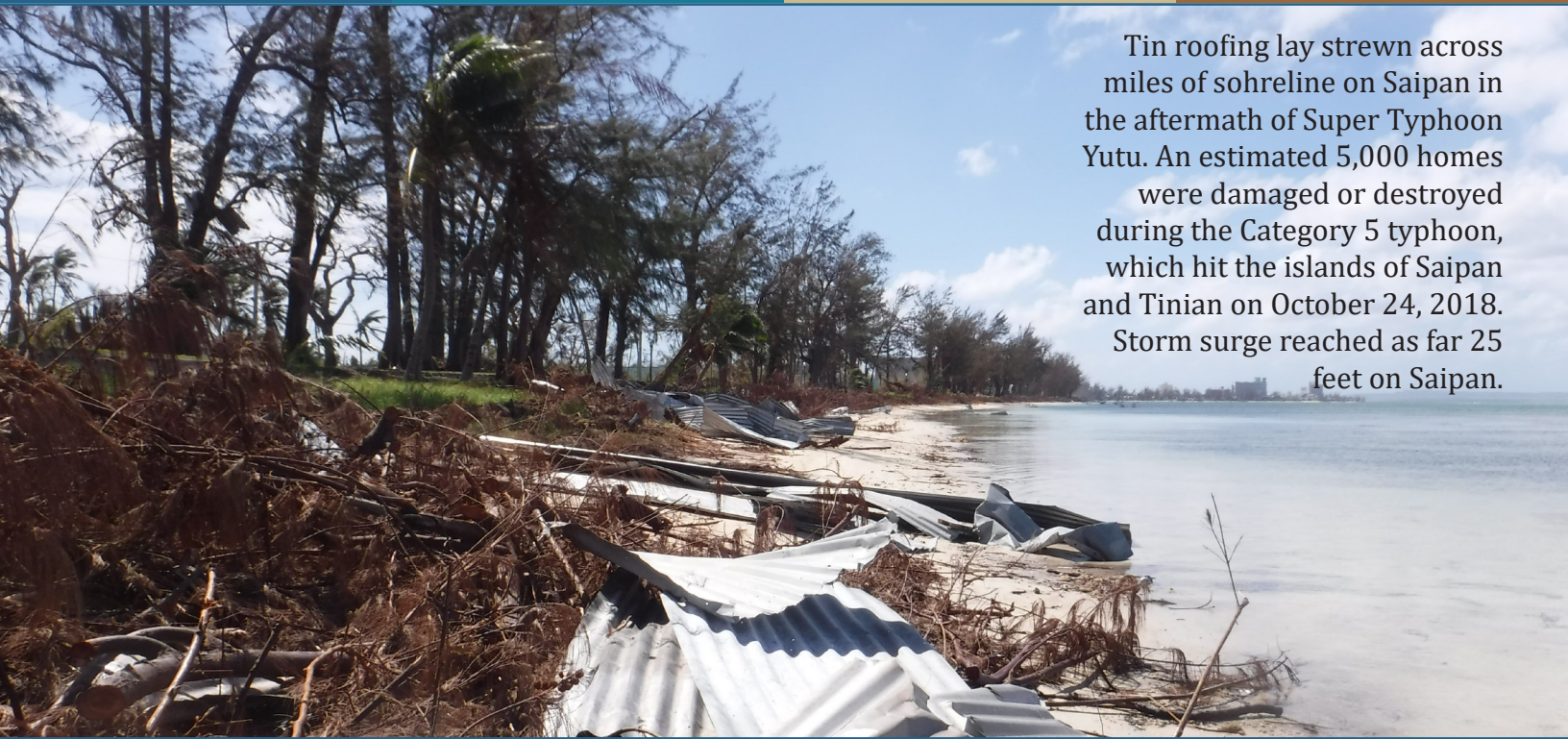
- The CNMI's estimated GDP increased 25.1% in 2017 after increasing 28.2% in 2016. 2017's estimated GDP is \$1.5B, all located within the coastal zone. (Bureau of Economic Analysis, US Department of Commerce)
- Total Economic Value of Saipan's coral reefs was estimated at \$61.16M per year (The Economic Value of the Coral Reefs on Saipan, Commonwealth of the Northern Mariana Islands, 2006)
- A sustainability manual for design, construction, and operation practices was published to encourage waste reduction and sustainable practices within the hotel sector of the CNMI.
- In FY17, DCRM reviewed 665 permit applications. (DCRM Permitting)



Looking to the Future

- Using QR code technology, DCRM will collect visitor surveys at prime tourist locations across the CNMI. The results from these surveys will help DCRM to derive user satisfaction and willingness to pay, and will ultimately inform recommendations for site management to enhance visitor's experience at these locations.
- CNMI reef managers are working towards implementing full scale coral restoration programs and sustain active management strategies such as coral nurseries, larvae propagation, and out-planting efforts to mitigate the loss of coral cover in the CNMI.





Tin roofing lay strewn across miles of shoreline on Saipan in the aftermath of Super Typhoon Yutu. An estimated 5,000 homes were damaged or destroyed during the Category 5 typhoon, which hit the islands of Saipan and Tinian on October 24, 2018. Storm surge reached as far as 25 feet on Saipan.

HELPING PREPARE FOR COASTAL HAZARDS

DCRM, along with the CNMI's Office of Planning and Development, Homeland Security and Emergency Management, Department of Public Works, and Capital Improvement Projects, are in discussions to adopt a standard sea level/storm inundation scenario for the CNMI. The formal adoption of a standard scenario will support the establishment of comprehensive plans and legislation that take into account projections of sea level rise across the Commonwealth.

"CNMI is still coping with the devastating impacts from the 2015 and 2018 typhoon seasons, including two direct hits from super typhoons Soudelor and Yutu. Amidst the Commonwealth's recovery efforts, a renewed interest in planning for climate change and coastal flooding has emerged. DCRM, in partnership with NOAA's technical resources, is now guiding a structured discussion among CNMI's decision makers to adopt more proactive planning and building standards to address coastal flooding. This includes the integration of an official set of sea level rise and storm inundation scenarios to guide CNMI-wide planning efforts, as well as the development of tools to help a broad range of stakeholders visualize those scenarios."

-Robbie Greene, CNMI Management Liaison

A State-Federal Partnership: Investing in Coastal Communities

The CNMI has participated in the National Coastal Zone Management Program since 1980. This state-federal partnership is essential to the continued health and economic growth of the state's coastal communities, businesses, and population.

FY18 Total CZM Grants: \$1,024,000

Janice Castro, Director
Division of Coastal Resources
Management
CNMI Bureau of Environmental and
Coastal Quality
Gualo Rai Center, Suite 304B
Caller Box 10007
Saipan, MP 96950
(670) 664-8300
www.dcrm.gov.mp



Coastal States Organization
Hall of the States
444 North Capitol St., NW, Suite 638
Washington, DC 20001
(202) 508-3860
www.coastalstates.org

www.facebook.com/CRMCNMI