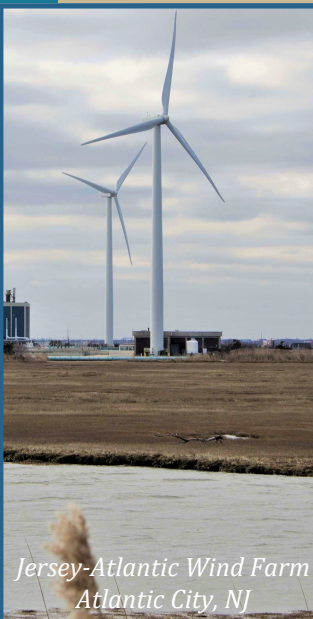




Aerial View of Ocean City, NJ



*Jersey-Atlantic Wind Farm
Atlantic City, NJ*



*Hudson River Waterfront
Walkway, Edgewater Borough, NJ*



*Matt's Landing Living Shoreline Restoration,
Maurice River, Cumberland County, NJ*

NEW JERSEY COASTAL MANAGEMENT

New Jersey's Coastal Management Program (NJCMP) addresses some of today's most pressing coastal issues such as ocean planning, energy facilities and development, and planning for sustainability and resilience in the 239 communities of New Jersey's coastal zone. The NJCMP includes an extensive network of partners that are providing coastal communities with tools and guidance to respond to the increasing coastal hazards associated with climate change.

State Program in Action

- Provided grant funding, planning, or technical assistance to over 87 of New Jersey's coastal communities.
- Equipped all 239 coastal communities in the coastal zone with Coastal Vulnerability Index mapping.
- Developed a guide, specific to New Jersey, about ecological solutions to coastal community hazards.
- Recently launched the "Resilient NJ" program that awarded 4 regional planning teams competitive awards to address coastal and river-related flooding.
- Engaged over 100 citizen scientists that have volunteered to participate in the Coastal Keepers Program to monitor living shoreline projects.
- Collaborated with multiple partners to provide technical assistance to 15 communities through the NJ FRAMES project, to develop a community-based regional plan addressing the impacts of coastal hazards and storm surge.

New Jersey has more than 1,800 miles of coastline from the New York border to the head of tide on the Delaware River, and approximately 53% of the state's population resides in the coastal zone.

Looking to the Future

- Explore how to incorporate and consider effective carbon sequestration into the prioritization and funding of coastal marsh restoration projects.
- Continue work on a Coastal Resilience Plan to make coastal areas more resilient to the impacts of future events and sea-level rise. The plan will inform the state action to reduce the impacts of coastal hazards and increase resilience throughout the state.
- Develop partnerships with organizations that serve the state's most vulnerable residents, those who are often under-resourced and underrepresented in planning and decision-making processes
- Identify successful strategies for sustainability and resilience by working with pilot communities to create successful models that will drive further adoption throughout the State.

December 2012 post-Superstorm Sandy,
Mantoloking, NJ



HELPING PREPARE FOR COASTAL HAZARDS

The Coastal Resilience Collaborative – a network of over 30 organizations – provides support, guidance, and technical assistance in the development of the Coastal Resilience Plan, and planning and ecological resilience activities of the NJ Coastal Management Program.

“After Superstorm Sandy, the New Jersey Coastal Management Program led the formation of the NJ Coastal Resilience Collaborative (NJCRC) that brings together government, academic and non-governmental experts to assist community response and recovery, and continues to lead multiple community-based efforts that enhance resilience and reduce risk to future coastal storms. As current chair of the Mid-Atlantic Regional Council on the Ocean (MARCO), the NJCMP also leads regional efforts to develop the Mid-Atlantic Ocean Data Portal and inform regional ocean planning efforts that reduce conflicts and support sustainable ocean use and protection of environmental resources.” - Tony MacDonald, Director, Urban Coast Institute and co-chair NJ CRC

A State-Federal Partnership

The NJ Coastal Management Program utilized the increase in funding received in Fiscal Year 2018 to hire additional staff who will lead development of a Coastal Resilience Plan for New Jersey. This Plan will identify the economic, ecological, and social value of the coastal zone, its vulnerabilities, and recommend strategies to make it more resilient to coastal hazards.

FY18 Federal Funds: \$2,796,000

FY18 State & Local Matching Funds: \$2,358,000

FY18 Total: \$5,154,000

NJDEP, Coastal Management Program
Mail Code 401-07, P.O. Box 402
401 E. State Street Trenton, NJ 08625
(609) 984-0058
njczm@dep.nj.gov



Instagram: @NJCoastalManagement
<https://www.instagram.com/njcoastalmanagement/>

Coastal States Organization
Hall of the States
444 North Capitol St., NW, Suite 638
Washington, DC 20001
(202) 508-3860
www.coastalstates.org